

# MDaemon MDS-CS

## Quick Start Guide

### Accessing Shared Files via MDS-CS on the BlackBerry

The BlackBerry® MDS-CS (Mobile Data System-Connection Service) connects wireless applications on BlackBerry® devices to the applications on an organization's application servers or web servers, permitting behind-the-firewall access to files and web applications from BlackBerry devices. This will (for example) allow you to access your private Intranet without a VPN connection, as well as any internal websites that can be accessed from the MDaemon® server.

The BlackBerry MDS Connection Service also receives and responds to web requests from the BlackBerry® Browser and other BlackBerry Applications, so that users can view Internet and intranet content on their BlackBerry devices.

### BlackBerry® Edition

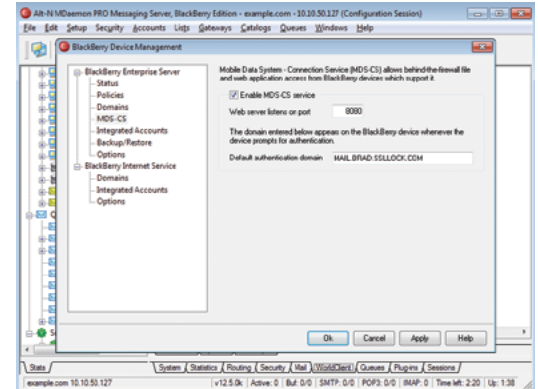


Figure 1-1

### Enabling MDS-CS in MDaemon

By default, MDaemon's MDS-CS runs on port 8080. You can enable MDS-CS within the MDaemon GUI:

1. Select the "Setup" menu.
2. Click on "BlackBerry Device Management."
3. Click on "MDS-CS" in the left-hand navigation menu.
4. Check the box "Enable MDS-CS service." [Figure 1-1]
5. Enter "8080" in the "Web server listens on port" field.
6. In the "Default Authentication Domain" field, enter the Windows® domain name (if using NT authentication) or enter the machine name (if using a workgroup).
7. Click "Apply" and "Ok."

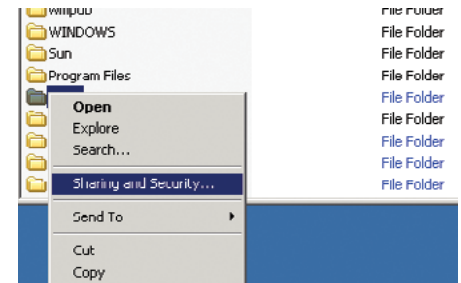


Figure 1-2

### File Sharing Setup



*Note: Windows Server 2003® screens shown. The following steps may vary slightly for other versions of Windows.*

1. Create or locate the folder you wish to share on the MDaemon server.
2. Right-click on the selected folder & select "Sharing and Security." [Figure 1-2]
3. Enable the option "Share this folder." [Figure 1-3]
4. Give the folder a share name in the "Share name" field. This is the name that will be entered on the BlackBerry device when accessing this folder's contents. [Figure 1-3]
5. Click on the "Permissions" button & select "Read" under the "Allow" column for all authorized users. [Figure 1-4]
6. Click "Apply" & "OK."

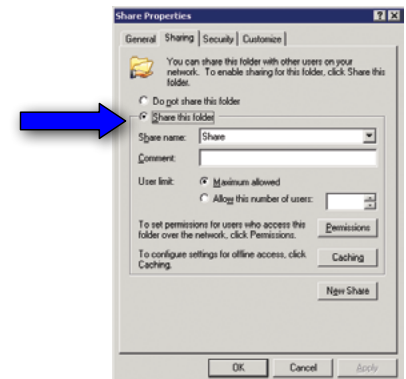


Figure 1-3

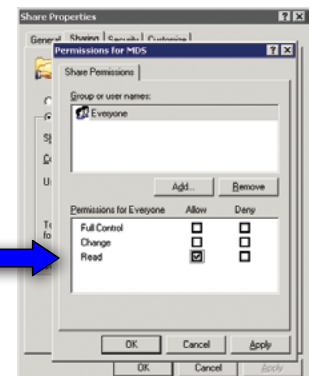


Figure 1-3

Accessing Shared Files from your BlackBerry

1. Open the “Applications” folder on your BlackBerry smartphone.  
[Figure 2-1]
2. Open the “Files” application. [Figure 2-2]
3. In the “Go To:” field, enter: “//computername/sharename/” (where “computername” is the name of the computer being accessed and “sharename” is the name of the share that was designated under Step 4 of the previous section). Example: “//ssllock17/Share/” [Figure 2-3]
4. Enter your Windows “username” & “password”, and then select “OK.” The “Domain” field should pre-populate with data entered on step 4 under “Enabling MDS-CS in MDaemon” at the beginning of this guide. Be sure to use an account that was given proper permissions under step 5 in the previous section (File Sharing Setup). [Figure 2-4]
5. Your files will appear on the following screen. [Figure 2-5]

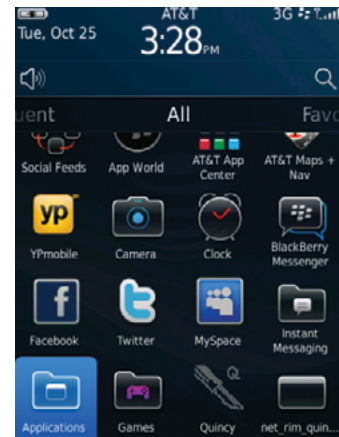


Figure 2-1

You can also access behind-the-firewall applications, such as CRM and SharePoint®. Instructions may vary depending on the application being accessed.

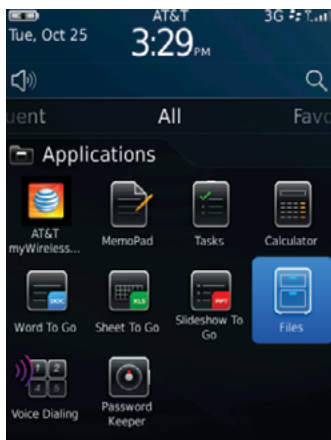


Figure 2-2

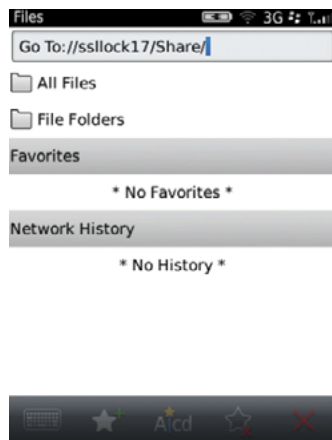


Figure 2-3

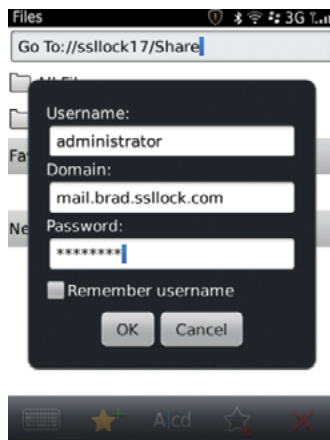


Figure 2-4

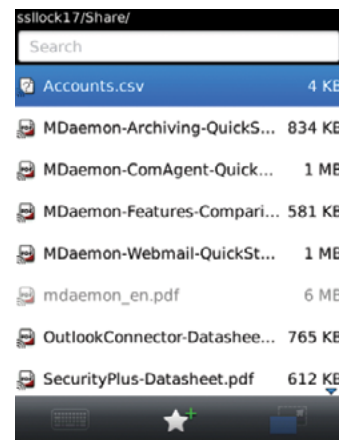


Figure 2-5